

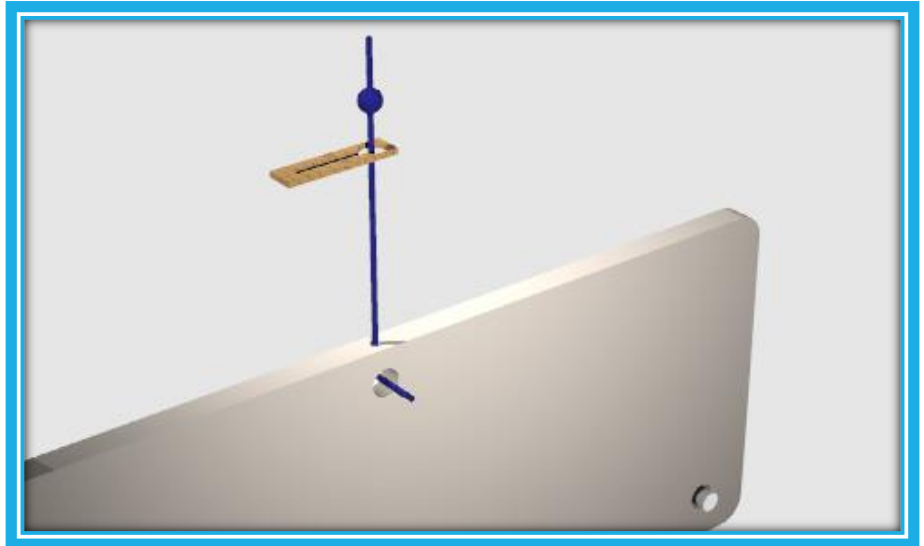
# Centerboard Lifting System for Small Boats

## CENTERBOARD PAINTER (LIFTING SYSTEM)

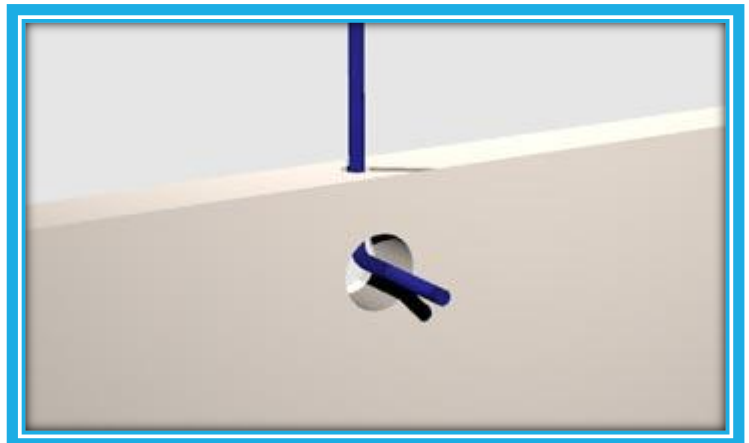
For small boats centerboards, two holes and a stopper knot are all that is needed.

For small boats centerboards, two holes and a stopper knot are all that is needed.

To attach the painter (= lifting line) to the centerboard, drill a hole through the centerboard side first then a hole through the edge as shown in the picture. Push your line through it from the top, make a nice stopper knot and pull the knot back in the hole.



Simple and no interference with the centerboard trunk sides.



At the top, the painter (line) can be tied to a cleat but we show a simple and elegant alternative. The keyhole shaped plate can be made from brass or hardwood or plain plywood epoxy coated. Several knots can be made in the painter, each corresponding to different CB settings: completely down, halfway, all up etc.

