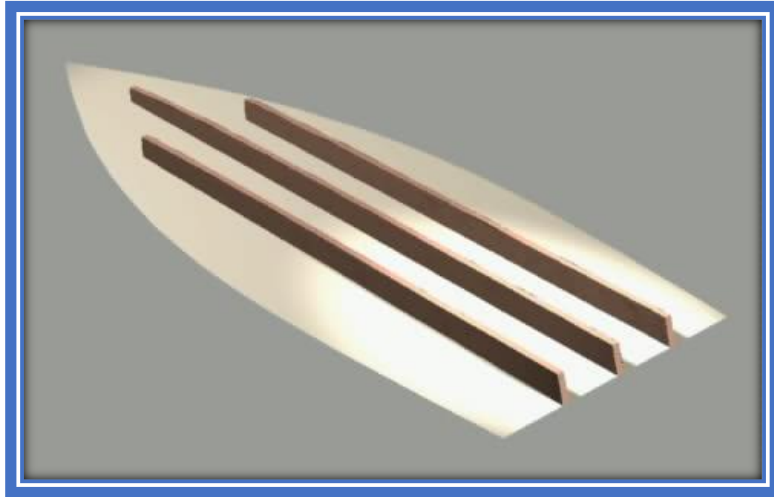


How To Build the Outboard Dory 16 in 12 Easy Steps

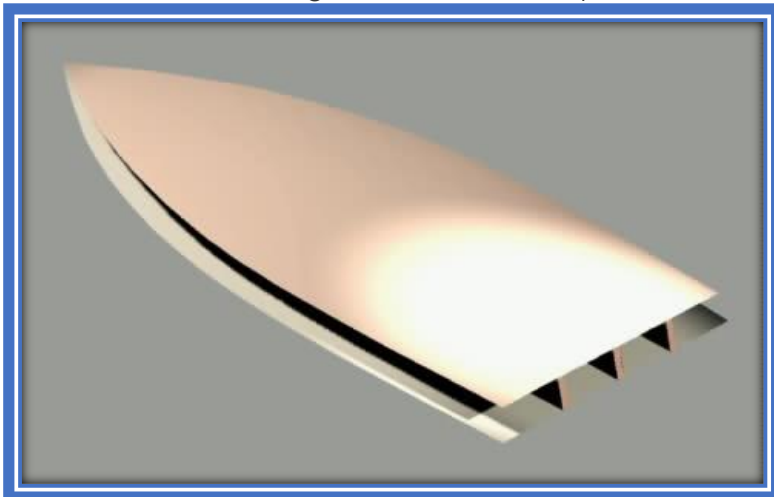
Step 1:

On the flat cockpit sole panel (all dimensions for the all parts are given on the plans), install the three stringers made from 2x6's.



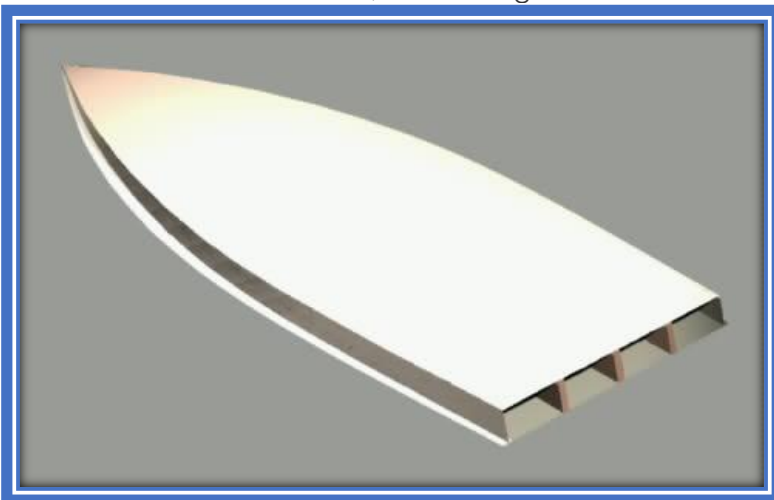
Step 2:

Cover the stringers with the bottom panel.



Step 3:

Cover the keel sides, build fiberglass seams.



Step 4:

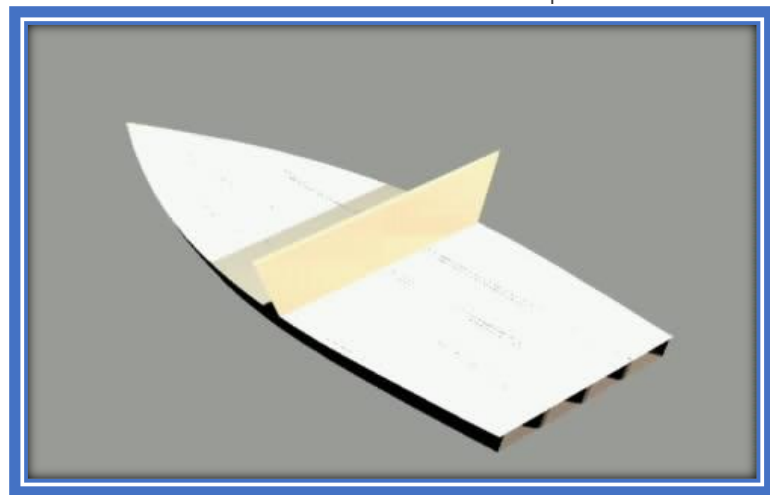
Flip the bottom assembly over.

How To Build the Outboard Dory 16 in 12 Easy Steps



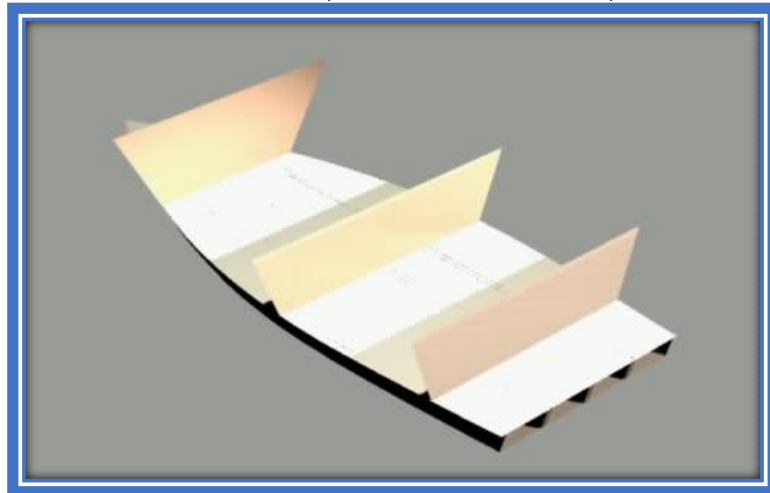
Step 5:

Install the mid mold on the cockpit sole.



Step 6:

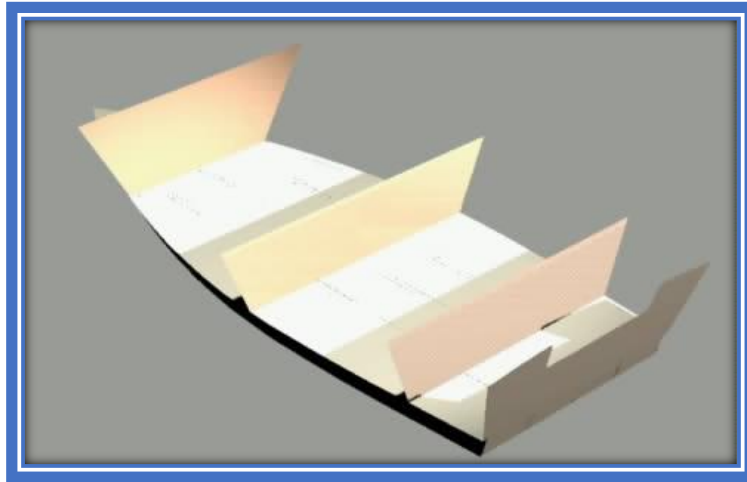
Install the bulkheads: they act as molds but stay in the boat.



Step 7:

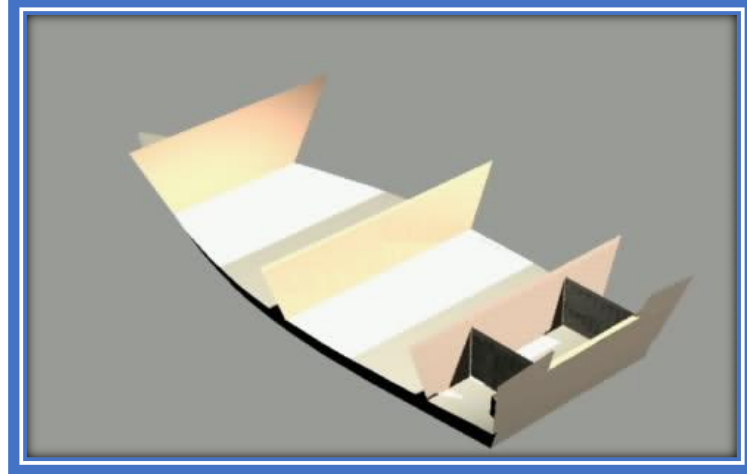
Install the transom panel.

How To Build the Outboard Dory 16 in 12 Easy Steps



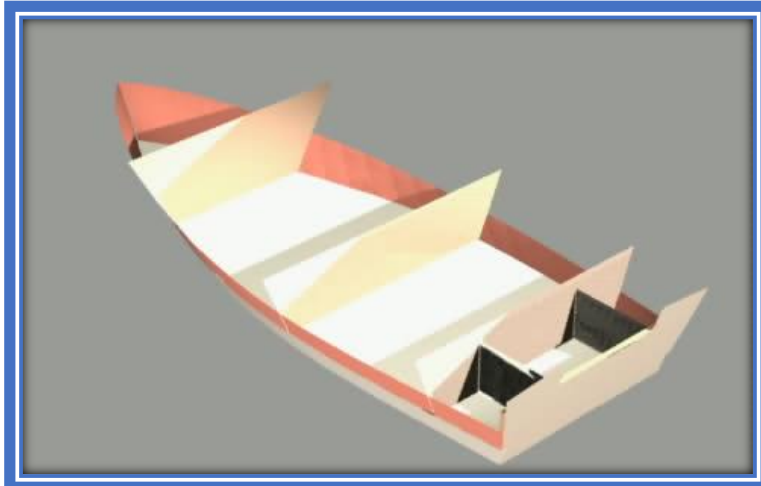
Step 8:

Install the quarter seat sides and outboard clamping board.



Step 9:

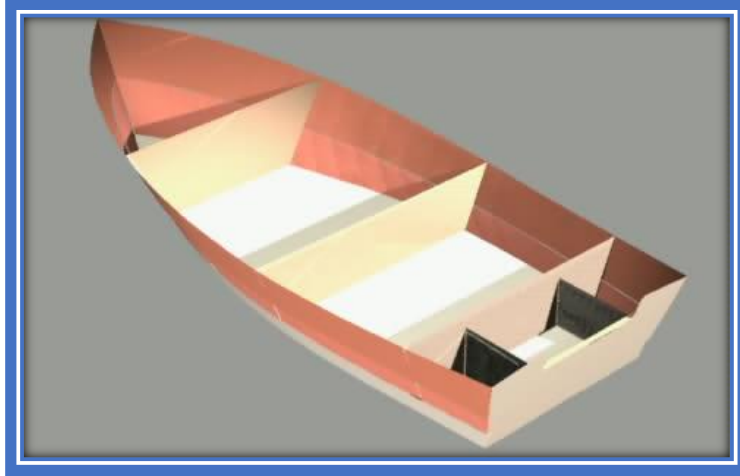
Wrap the lower side panel (dimensions on the plans) around the structure.



Step 10:

Install the topside panel overlapping the lower panel.

How To Build the Outboard Dory 16 in 12 Easy Steps



Step 11:

Cut bulkheads to size, cover seats and foredeck, finish fiberglass taping.

Step 12:

Test run.

